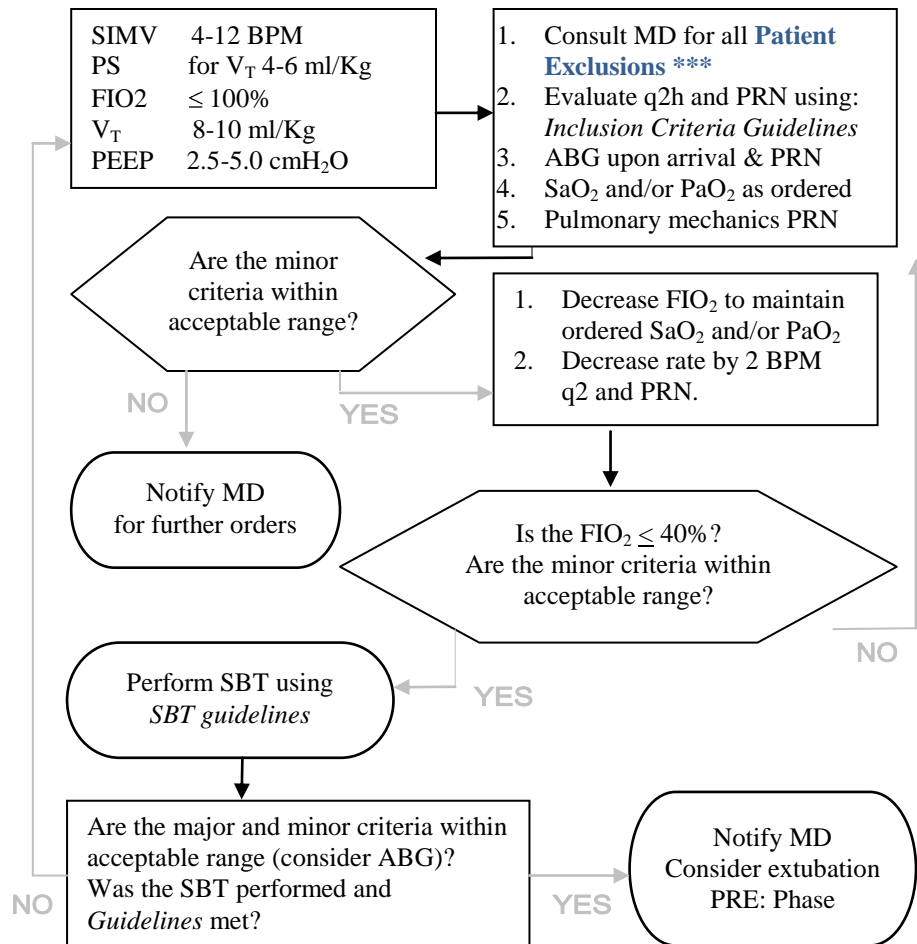


**The University Hospitals and Clinics
Respiratory Care Department
Rapid Ventilator Weaning Care Plan**

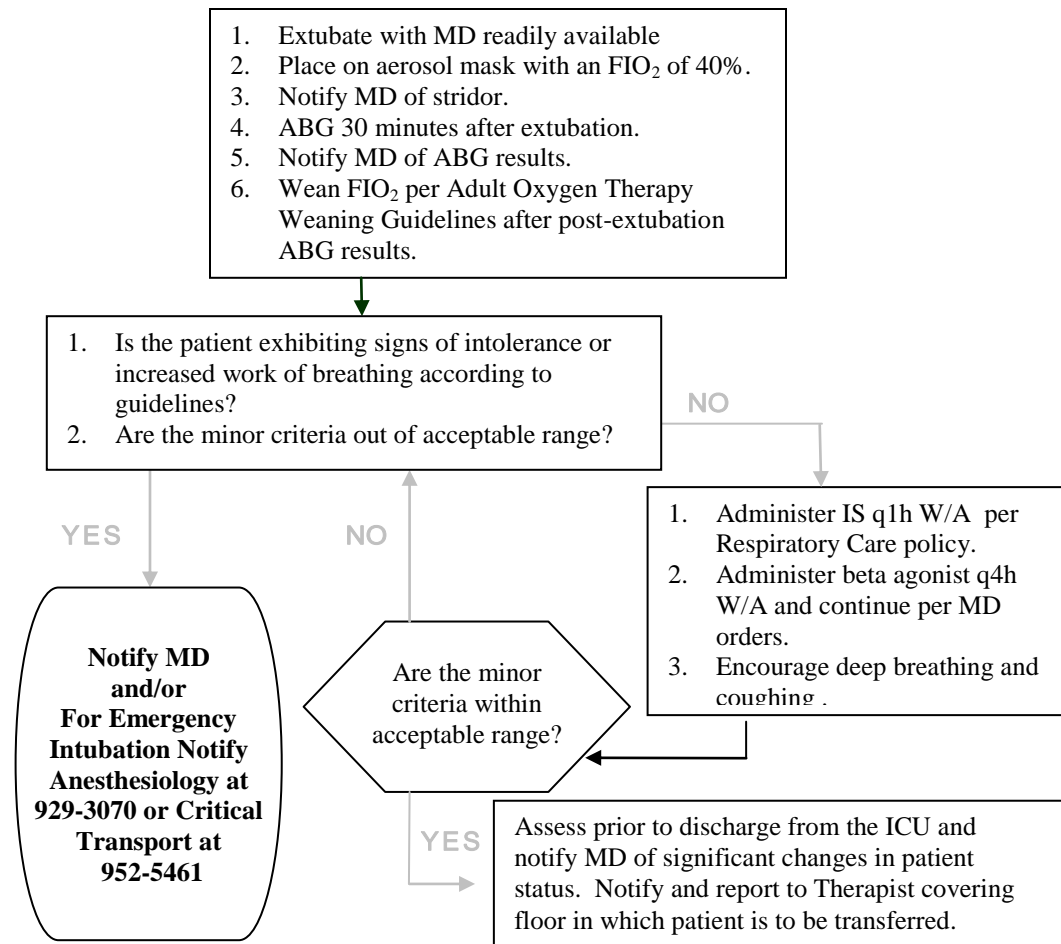
Orders: See *Doctor's Orders Rapid Ventilator Weaning Guideline*

References: Cohn Lh, ed Cardiac Surgery in the Adult. New York: Mcgraw-Hill, 2008
ACCP CHEST Oct. 2002 p.157S , St. Luke's Episcopal Hospital Weaning Protocol
RESPIRATORY CARE Weaning from Mechanical Ventilation April 2002
ACCP CHEST Dec. 2001 Evidence Based Guidelines for Weaning/Discontinuation Ventilatory Support

Phase I



Phase Extubation



*****Rapid Wean Patient Exclusion:** (1) preoperative pulmonary failure requiring intubation (2) uncompensated CHF with pulmonary edema (3) severe pulmonary hypertension or right-sided heart failure requiring hyperventilation or nitric oxide (4) cardiogenic shock (5) deep hypothermic circulatory arrest (6) temp <35°C (7) PaO₂/FIO₂ <200 (8) pH < 7.30 (9) persistent mediastinal bleeding (10) a cerebrovascular accident or reduced mental status (inability to follow commands or protect airway)

Inclusion Criteria Guidelines: stable hemodynamic; PaO₂ or SpO₂ as ordered; PEEP ≤ 5 cm H₂O; Heart Rate ≤140 BPM; respiratory rate ≤ 25 BPM; no significant life threatening arrhythmias or bleeding; consider CXR, Hcgb >7 HCT > 21, adequate pain control.

Minor Criteria RR ≤25; ABG pH 7.35-7.45; PCO₂ , PaO₂ and/or SaO₂ as ordered. (May use last reported values)

Major Criteria Spontaneous VT ≥ 5 ml/Kg; VC 10-15 ml/Kg; NIF < -20 cmH₂O; Minute Vent ≥6 ≤11 LPM; Rapid Shallow Breathing Index (RSBI) ≤ 105

Spontaneous Breathing Trial (SBT) Criteria Guidelines: awake and alert (all except Neurosurgery/Neurology patients); all Inclusion Criteria Guidelines met; SBT to be conducted via MD orders with the following parameters; PSV = 5 cmH₂O, PEEP = 5 cmH₂O maintaining Major and Minor Criteria for 30 minutes.